

Analysis of Reinforced Concrete Spatial Structures with Different Structural Openings and Forms

Agim Seranaj¹, Erald Elezi², Altin Seranaj²

¹*Department of Structural Mechanics, Civil Engineering Faculty, Polytechnic University of Tirana, Albania*

²*Department of Building Constructions and Transport Infrastructure, Polytechnic University of Tirana, Albania*

ABSTRACT

The first reinforced concrete spatial structures date from 1920. Since then, their popularity has increased as a new structural system with widely used materials like reinforced concrete. The building trend of these structures faded near 1970s, because of the high costs in formwork and labor work compared to other structural systems, but also the high calculations difficulty and the lack of knowledge for their structural behavior strongly connected with their form.

The technological evolution of formworks, like air inflated forms or polymer modular formwork, as well as the technological advance of computer and software industry for civil engineering through automation of numerical methods and creation of new algorithms, have helped to reach new levels of expertise during the conceptual and structural design process.

The scope of this analytical study is the use of structural openings to create new lighter, sustainable and architectural forms of structures, using a new approach to the form finding process. The paper includes structure cyclic analysis due to finding the appropriate position and geometrical form of the openings considering stresses, deformations and boundary conditions of specific cases. Optimizations and analysis are made using advanced optimization algorithms of form finding and topological optimization (ATOM – Abaqus Topology Optimization Module ®) and FEM based software for static and seismic analysis.

Based on the analysis data of the case examples for the new designing approach to structural openings and forms, presented on this paper with the use of advanced software technology, we conclude that spatial structural system in 21st century should be considered as the next engineering challenge in conjunction to architectural trends for free, irregular and diverse forms.

Keywords: *Spatial structures, optimization, FEM, static, seismic*

INTRODUCTION

Spatial structures are a type of structural system which cover large areas only with edge supports (column free). This structural system is highly connected with statically stable forms with different thickness mostly found on nature (egg shell, turtle shell etc.)

Due to high labor costs and difficulties in design of these structures they lost their popularity around 1970s. The use of other structural systems which were not as architecturally attractive as shell structures but easier to design and build replaced for a long time this type of structure. Shells stresses and strains are highly connected with their form. With small changes in form a new field of stresses can be obtained.

Due to this relation with form shells are very vulnerable to build errors, material strength and specialization of workers. Other difficulties in designing shells is finding the right ratio between thickness and span. Many authors made recommendations about this ratio but as they

are connected to form a proper formula for this ratio cannot be obtained. Logically the larger the span is we expect thicker shells but on the other hand thicker shells mean heavier ones and more vertical forces to these structures can create tensile stresses and large compression ones, on the other hand thin shells can lead to element failure due to cracks and material failure.

To obtain small stresses we should design and analyze the proper form. These structures are very attractive to architects due to column free forms, different shapes and large spans that they cover. From the shells' popularity era to nowadays a lot of engineering advances in mathematics, material engineering, construction engineering, computer eng. etc. Concrete shells, due to the combination of filling and load carrying capacities are being designed and calculated as 'thin shells', with a radius-to-thickness ratio starting at 200 - 800 or higher. The low consumption of material follows from the fact that concrete shells are very effective in carrying loads that are perpendicular to their surface creating in-plane membrane stresses. Concrete shells include single and double curved surfaces which are either synclastic, monoclastic or anticlastic.

From the above introduction a primary research question can be formulated:

Can these structures gain back their popularity with the use of advanced software and computational methods in form finding, obtaining new shell forms due to given optimization conditions and boundary conditions, to make the design process easier without losing the architectural approach?

The asked research question is evaluated by using optimization methods (shape and topology) in a simple shell as a groin vault, by creating an open path to evaluate and optimize more complicated forms and different spans.

Historic approach

Shell structures have an ancient history. Starting from the Pantheon in Rome and Hagia Sophia in Istanbul, these structures made a difference in the history of architecture and engineering. For a long time shells were made with bricks or other materials depending on the advances in materials. Reinforced concrete thin shells can be defined as slabs with curvature whose cross dimension (thickness) is very small compared to span dimension or other dimensions as radius and curvature. Concrete shells are a slow evolution from masonry arches and domes, which were used from the early days of human construction evolution. The popularity of concrete shells was risen after WWII. Using concrete made these structures popular because concrete can be cast in any forms. The advantage of concrete shells is that as steel can be used as a structural system, but it has the body to cover the space, so it acts like a structural roof.

With the newly developed reinforced concrete in the 20th century, engineers had new possibilities of creating long span shell forms. Franz Dischinger and Ulrich Finsterwalder designed in 1925 one of the first concrete shells in modern era, the Zeiss planetarium in Germany, followed by other engineers as Pier Luigi Nervi, Eduardo Torroja, Anton Tedesko, Nicolas Esquillan, Felix Candela and Heinz Isler, who created the most famous shells during the 1950s - 1970s. These engineers developed new forms of concrete structures by using and developing known formulas about equilibrium but also by using experimental small scale forms with the use of cement to check the structural reaction of shells due to vertical loading. The surface can be generated by mathematical functions or by form-finding methods such as hanging membranes or pneumatic models. By using hanged models, the approach is to create tension free structures, as the hanged model stays and gets a form within the fixed edges (the supports) if we reverse it, we will get a total compression form.



Figure 1. Zeiss Planetarium



Figure 2. Hanged membrane model

Numerical and analytical theories of shell study

In the early times there was a difficulty in calculating the internal forces in a cross section for a shell structure. Because of their shape the use of classical formulas was nearly impossible in complicated forms of shells. Mostly the classical theories and solutions depend on General Theory of Elasticity [1] and equilibrium of forces. These theories made a revolution in calculation of plates and shells but they were not enough to solve complicated forms. Mostly these theories are used in simple created shells by regular forms or created by surface of revolution or extrusion (sphere, cylinder, cone etc.).

With the creation of numerical methods for element analysis things changed for shells also. Now with the use of automated numerical methods in advanced computers with faster processing units study of shell stresses, strains, and element forces is made easier. By using FEM (Finite Element Method) based software we can make cyclic analyses of the structure to check its structural behavior or make sensitivity analyses by changing one of the components (thickness, span, curvature) in it and finding the differences in results.

Optimization Process and Methods

The geometry forms a structural effective shell if the shell is able to develop a prevalent membrane stress field by avoiding bending moments. Optimization techniques, such as shape optimization by minimizing strain energy, may create new structural forms which are more appropriate to structural approach due to stresses and strains. Optimization may be enhanced by advanced computation optimization algorithms such as dynamic relaxation etc. In general the design will lead to a shell with an opening angle between 60 and 90 degrees. The shell thickness is practically bounded by 60 to 80 mm for one- or two-layers of traditional steel reinforcing steel bars. The reinforcement percentages are rather low, approximately 0.15 to 0.4%.

Structural optimization can be defined as a process to create a better structural solution for problems created during the design. The scope is that considering an optimization objective, to create a new optimized structure more efficient than the first one in terms of internal forces, strain energy, volume etc. It is a very simple principle but that includes a lot of various knowledge in many disciplines as structural analysis, design modelling, sensitivity analysis, mathematical and algorithmic programming strongly connected to civil engineering principles. The first steps of structural optimization were taken by *A.G. Michell* who tried to create the most efficient structure to carry a point load with least possible weight. Michell tried to find the best trajectory for stress distribution among element.

A clear example is how a tree can be seen as a structural system, where the branches have the right angle and thickness and the trunk is thicker near the ground to stand wind forces. Other examples can be found in other shells like turtle shell that can withstand huge forces and create constant distribution of surface stresses, and other organisms that evolved in a form to withstand external forces or threads. The principle of constant distribution of surface stresses (as seen in soap bubbles) can be used itself in optimization of shell structures. Different optimization objectives can send to different shapes and results, so it's very important to choose the right boundary conditions, optimization objectives and constrains. With the use of advanced optimization algorithms we can apply a multi objective optimization, multi single term objectives or single combined ones.

As mentioned shells are e very shape sensitive structures thus with little differences in shape a different structural behavior can be obtained, Sometimes optimization for shells can be very difficult if we optimize by multi-criteria or if we take in count the nonlinear effects on concrete or buckling, dynamic, seismic forces. This process can be easy if we take in count only vertical forces and self-weight of the structure. The optimization of shells can be very sensitive to parameters as shells itself are optimized by form so the risk of not getting correct results over optimization algorithms is very high. Optimization can be categorized in function of the optimization objective and parameters. A categorization includes: shape optimization, topology optimization (structural openings), material optimization, size optimization etc.

In this paper it is used shape and topology optimization. Shape optimization begins with a finite element model which is imported and meshed inside the software, minimizes stress concentrations in the selected areas to redefine the mesh, using the results of a stress analysis to modify the surface geometry of a component until the required stress level is reached. Shape optimization then attempts to reposition the surface nodes of a selected region until the stress across the region is constant.

Cyclic analysis that the software offers (Abaqus ®) makes possible to check every cycle of the optimization process so you can check the advance of the stresses and shape. It is very important to set the correct parameters to optimization because as mentioned before may lead to very different results. Shape optimization is used in double groin vault to find the best shape with different optimization objectives, firstly to minimize surface stresses and secondly to minimize the density of strain energy. Possible shape optimization constraints can be connected with stresses, strain, strain energy density. On the other hand typology optimization means removing finite elements by lowering their relative density and by recalculating the stresses every removal cycle. Topology optimization begins with an initial design, which is assumed to be the maximum physical extent of the component, and determines a new material distribution by changing the density and the stiffness of the elements in the initial design while continuing to satisfy the optimization constraints. General topology optimization uses an algorithm that adjusts the density and stiffness of the design variables while trying to satisfy the objective function and the constraints. The general algorithm is partly described in Bendse and Sigmund (2003). In contrast, condition-based topology optimization uses a more efficient algorithm that uses the strain energy and the stresses at the nodes as input data and does not need to calculate the local stiffness of the design variables. The condition-based algorithm was developed at the University of Karlsruhe, Germany and is described in Bakhtiary (1996) [2]

Also in both types of optimizations used in this paper, geometric constrains are applied to maintain the main architectural form. This is possible in the optimization-FEM software used by using an advanced algorithm to optimize with multiple parameters and constrains.

Both optimization processes pass through the same cycle but with different approach to optimization techniques. Firstly the optimization parameters are set, than the number of cycles to archive this optimization objective. Constrains or stop conditions may be added and in every

cycle of the optimization step it is checked if the constrain is violated or stop condition is reached, if yes the optimization process stops, if no it continues to the next interaction.

Shape optimization

In our paper the initial model is groined vault (also sometimes known as a double barrel vault or cross vault). The example is made using two barrels each with 30m of diameter by creating the classical form of the shell (as seen in the image below) with a height of 10 m. The first optimization process was made for shape optimization using the objective of minimization of main principal stresses. Studying the stresses of this model is easy noticeable the effect of groin (the contact between two barrels). In this part of the structure we can notice an increase of the main principal stresses (as can be checked by the colors after static structural analysis).

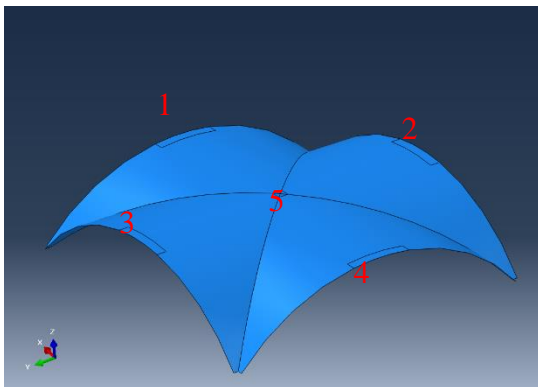


Figure 3. Initial geometry

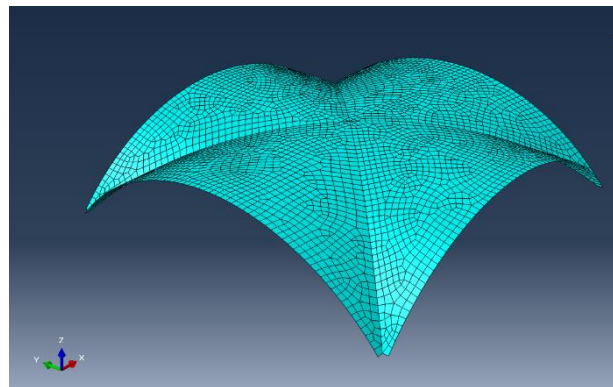


Figure 4. Dense mesh of FE

The models are calculated with dense mesh (*ref. Fig 4*) to get more reliable optimization results. Shape optimization is very connected to mesh density because it is related to node moving to get the best shape.

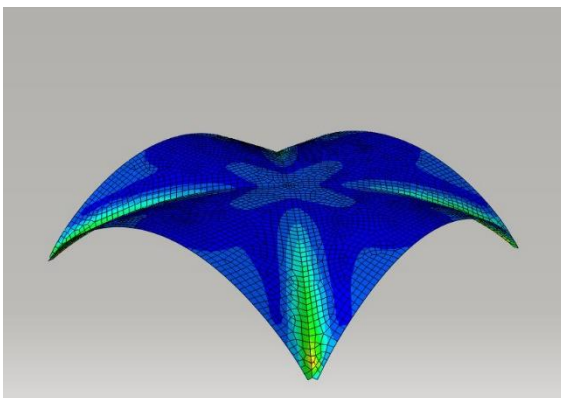


Figure 5. Principal stresses for initial geometry

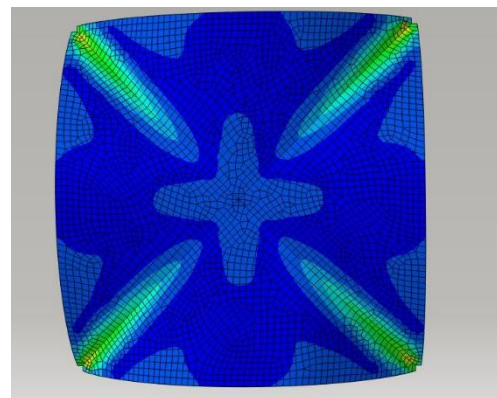


Figure 6. Principal stresses (top view)

Optimization parameters:

Type : Shape Optimization, *Design Response* : Principal stresses

Design Objective : Minimization of Design Response parameters (stresses)

Geometric Restrictions : Design direction only +/- z (x and y fixed), global coordinates, for areas marked with red numbers (*ref. Fig 3*) to maintain the area covered and not to get a result radically different from the initial architectural shape.

Optimization process is made using a condition based shape algorithm with 30 cycles of optimization by single design parameter with geometrical restriction.

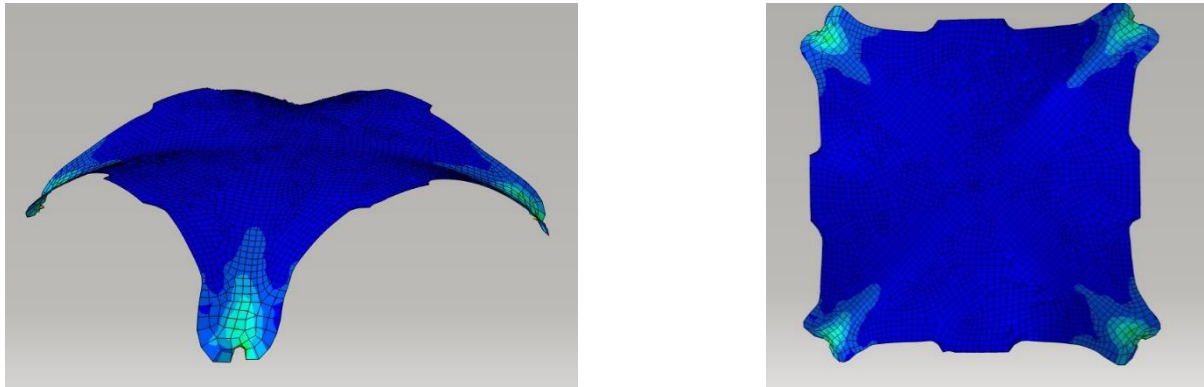


Figure 7. Theoretical shape Optimization results (3D view and Top view)

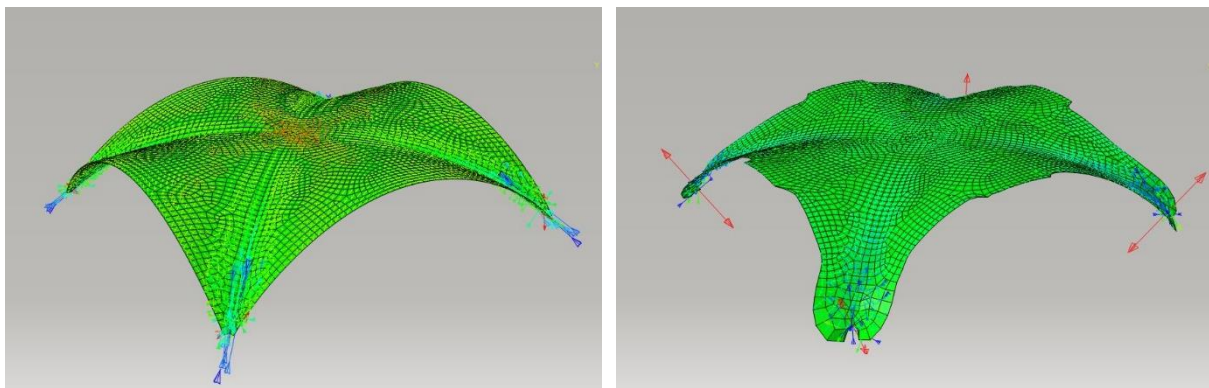


Figure 8. Differences (initial-after opt.) in S_{max} and S_{min} (in plane) and S_{max} (out of plane)

As can be seen by the shape opt. result by using the mesh smoothing by algorithm the increased stresses in the zone of the groin between barrels are minimized as described in the optimization objective, also the fixed regions show clearly the similarity between the optimized shape and the initial one (*ref. Fig 7*). Two main changes can be seen. One – going from a thick edge groin to a smother one, and two – creating wider zones of elements near the support zones to equally distribute the stresses in this area. Differences in shape (by using nodal displacement are seen near the top of the structure where can easily be seen how shape opt. algorithm eliminates higher stress zones. On the negative side we have higher out of plane stresses near the support zones, this connected also with the fixed single node for boundary conditions (*ref. Fig 8*). The above mentioned results are reflected in the Table 1 of one side groin edge nodes and graphical explanation.

Table 1 Nodal coordinates for the edge of two groins (contact line)

Node	Original coordinates (global)			After Optimization			Differences		
	x	y	z	x	y	z	dx	dy	dz
215	30530.60	4064.52	1235.09	30556.50	3969.91	1236.02	25.90	-94.61	0.93
216	30500.00	4095.21	1269.18	30514.70	3985.19	1271.04	14.70	-110.02	1.86
217	30468.70	4126.43	1302.28	30495.40	4037.46	1306.44	26.70	-88.97	4.16
218	30437.00	4158.17	1334.40	30463.90	4085.56	1347.16	26.90	-72.61	12.76
219	30404.80	4190.39	1365.55	30432.00	4132.34	1384.22	27.20	-58.05	18.67
220	30372.10	4223.06	1395.72	30400.10	4179.69	1417.04	28.00	-43.37	21.32
221	30339.00	4256.17	1424.93	30357.80	4219.32	1448.12	18.80	-36.85	23.19
222	30305.50	4289.69	1453.19	30313.50	4257.54	1477.43	8.00	-32.15	24.24
223	30271.60	4323.60	1480.51	30266.30	4291.92	1507.11	-5.30	-31.68	26.60
224	30237.30	4357.88	1506.89	30224.10	4333.52	1533.55	-13.20	-24.36	26.66
225	30202.70	4392.50	1532.35	30184.10	4372.76	1558.42	-18.60	-19.74	26.07
226	30167.70	4427.46	1556.89	30145.20	4408.67	1582.54	-22.50	-18.79	25.65
227	30132.40	4462.73	1580.52	30107.90	4443.72	1605.47	-24.50	-19.01	24.95
228	30096.90	4498.29	1603.24	30073.20	4478.76	1626.66	-23.70	-19.53	23.42
229	30061.00	4534.13	1625.08	30038.40	4512.53	1647.83	-22.60	-21.60	22.75
230	30024.90	4570.23	1646.03	30001.30	4545.10	1669.41	-23.60	-25.13	23.38
231	29988.60	4606.59	1666.10	29962.40	4578.32	1690.74	-26.20	-28.27	24.64
232	29952.00	4643.17	1685.31	29925.10	4615.24	1710.03	-26.90	-27.93	24.72
233	29915.20	4679.98	1703.65	29888.90	4654.49	1728.13	-26.30	-25.49	24.48
234	29878.20	4716.99	1721.13	29851.70	4694.31	1745.20	-26.50	-22.68	24.07
235	29841.00	4754.20	1737.77	29812.70	4733.63	1761.18	-28.30	-20.57	23.41
236	29803.60	4791.60	1753.56	29772.60	4772.06	1775.98	-31.00	-19.54	22.42
237	29766.00	4829.16	1768.52	29732.30	4810.38	1789.71	-33.70	-18.78	21.19
238	29728.30	4866.89	1782.65	29692.50	4848.75	1802.31	-35.80	-18.14	19.66
239	29690.40	4904.76	1795.95	29653.00	4887.00	1813.96	-37.40	-17.76	18.01
240	29652.40	4942.77	1808.44	29614.00	4924.85	1824.77	-38.40	-17.92	16.33
241	29614.30	4980.92	1820.11	29575.60	4962.41	1834.83	-38.70	-18.51	14.72
242	29576.00	5019.18	1830.97	29537.80	5000.06	1844.28	-38.20	-19.12	13.31
243	29537.60	5057.55	1841.02	29500.70	5038.33	1853.11	-36.90	-19.22	12.09
244	29499.10	5096.02	1850.27	29463.30	5077.46	1861.38	-35.80	-18.56	11.11
245	29460.60	5134.59	1858.73	29424.60	5117.20	1869.00	-36.00	-17.39	10.27
246	29421.90	5173.24	1866.39	29383.90	5156.90	1875.82	-38.00	-16.34	9.43
247	29383.20	5211.96	1873.26	29342.20	5194.95	1881.39	-41.00	-17.01	8.13
248	29344.40	5250.75	1879.34	29304.80	5235.03	1885.79	-39.60	-15.72	6.45
249	29305.60	5289.59	1884.63	29275.50	5277.50	1888.84	-30.10	-12.09	4.21

The tabulated data are for the points 1 and 1', while the data are taken for points near groin edge 2 and 3, and on the other hand as it is noticed in 1 and 1' that the differences between z coordinate is positive (the edge is risen), also for 2 and 3 the difference in z coordinate is positive, equal, but less than 1' and 1. The position of these points are shown schematically in Figure 9.

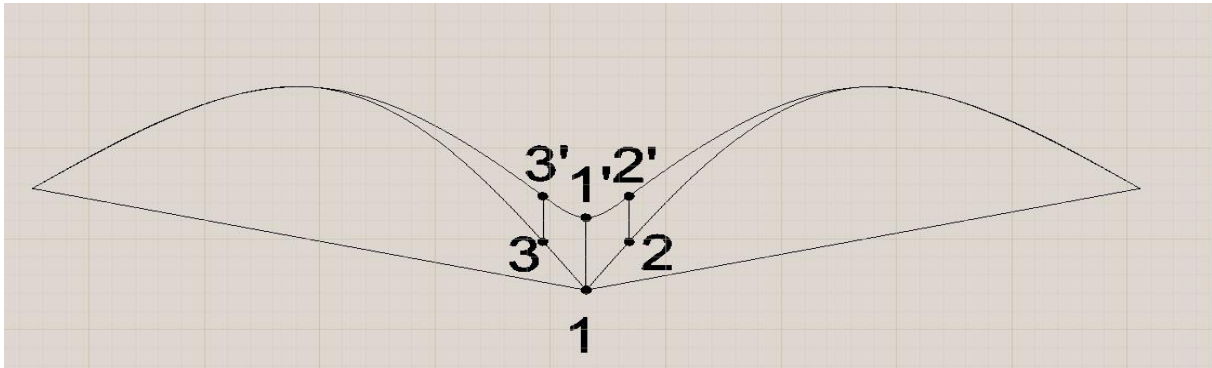


Figure 9. Graphical illustration of node movement after optimization

Topology optimization for different load cases

In this paper is discussed finding the best position for structural openings regarding a given objective also called as topology optimization. Using topology optimization on shells is difficult for their sensitivity on forms and forces direction. Topology optimization (by relative density algorithm) is mostly used in solid objects but using it in shell structures has given good results.

The first topology optimization is made as follows- Optimization parameters:

Type : Topology Optimization, *Design Response* : Strain energy

Design Objective : Minimization of Design Response parameters (strain energy)

Geometric Restrictions : Final optimization form must have 70 % of the initial form volume.

Optimization process is made using a condition based shape algorithm with 30 cycles of optimization by single design parameter with geometrical restriction.

Case 1: Gravity and service loading (distributed)

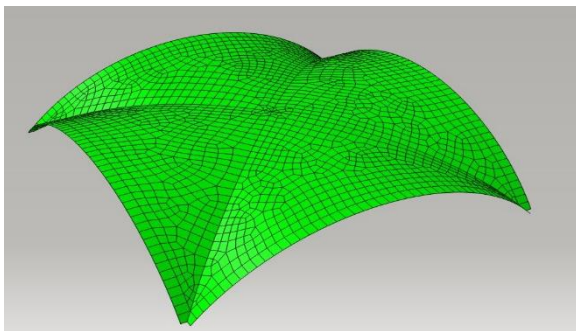


Figure 10. Initial geometry

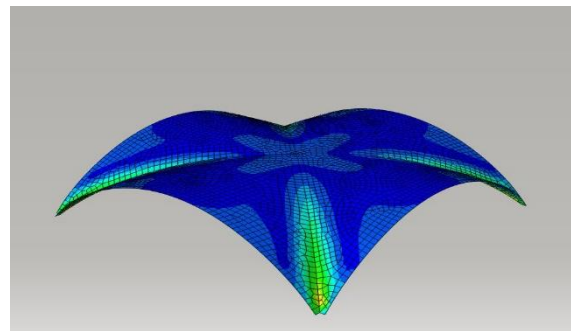


Figure 11. Stresses of initial geometry

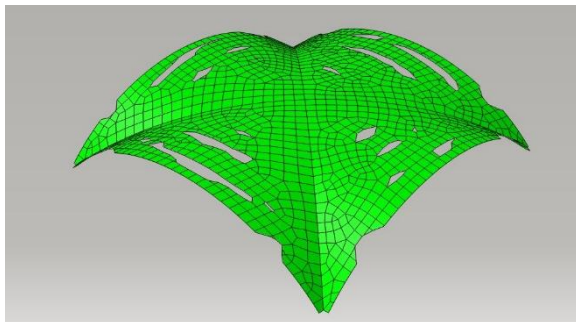


Figure 12. Final theoretical topology geometry

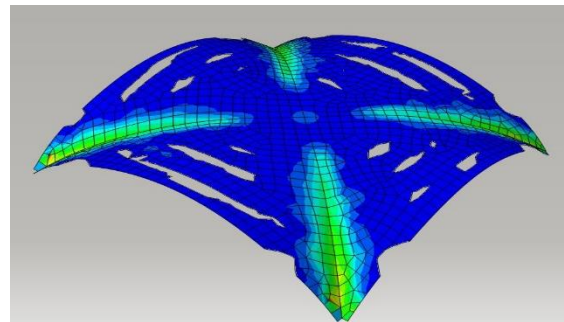


Figure 13. Stresses of final geometry

So it is clearly noticeable that the topology optimization creates structural openings near the less stressed areas. The new structure is 30 % lighter than the first one in terms of weight but additional material like glass (thinner and lighter) may or should be added in the structural openings so the shell would now lose its purpose as a roof (ref. Fig 12 & 13).

So we can conclude that the position of the structural opening can be set by using advanced algorithms of topology optimization and for the case studied under gravity loading the structural openings should start in the direction and form of the given areas in the above shown pictures. Of course we expect that for different types of loadings to have different results strongly connected with the sensitivity of shells due to form and vertical loading.

The second topology optimization is made as follows- Optimization parameters:
Type : Topology Optimization, *Design Response* : Strain energy
Design Objective : Minimization of Design Response parameters (strain energy)
Geometric Restrictions : Final optimization form must have 60 % of the initial form volume.

Optimization process is made using a condition based shape algorithm with 30 cycles of optimization by single design parameter with geometrical restriction.

Case 1: Gravity and concentrated force in the center (2000 kN) (ref. Fig 14&15)

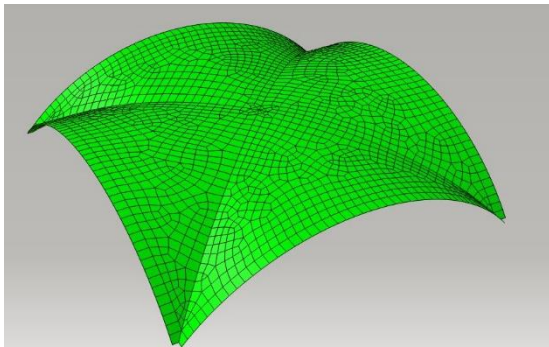


Figure 14. Initial geometry

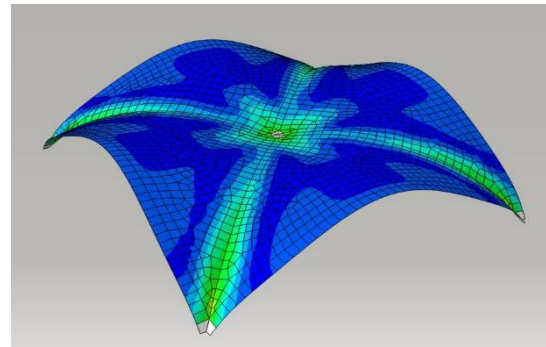


Figure 15. Stresses of initial geometry

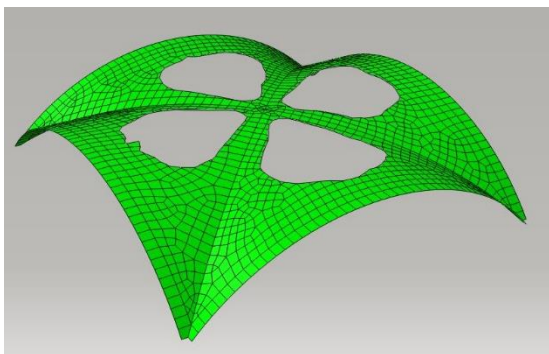


Figure 16. Final theoretical geometry 2

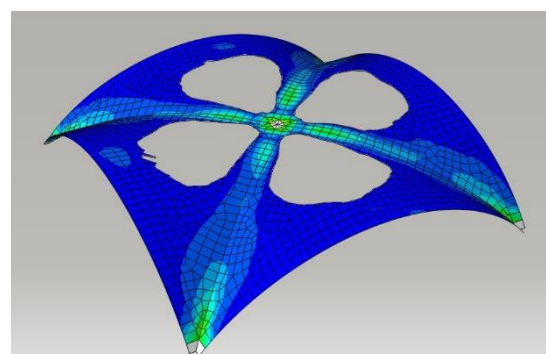


Figure 17. Stresses of theoretical geometry 2

As can be seen from the results the position and size of the openings change from case to case. If we concentrate in the stress field of the initial geometry we can approve that the relative density algorithm used has started removing elements in the shape and position of blue areas (less stressed) and then by analysing the structure cycle after cycle we reach to the final geometry. As mentioned above our structure is 40 % lighter but to maintain the structural function as a roof the structural openings can be covered with lighter materials than concrete (ref. Fig 16 & 17). Also in this case we got the position and the form of the openings. It is the initial

step of creating structural opening to create more architectural, lighter and statically stable shell roofs.

CONCLUSIONS

Use of new methods in form finding and shape optimization so this structures can have a better structural behaviour regarding different loading and boundary condition. With small changes in shell form we can reach different fields of stresses.

Use of software automated numerical methods to make sensitivity cyclic analysis due to different parameters as stresses, strain energy, strain energy density etc.

Use of advanced optimization algorithms in shape and topology optimization which are capable of calculating optimization problems with multiple objectives, variables, constrains, stop conditions, or geometric restrictions due to given loads and boundary conditions.

Creation of new algorithms with integrated analytical and numerical methods to be more practical and simpler to use by structural engineers for shell structural system, will help the future applications of these structures.

Finding new shapes and use of structural openings can bring to creation of new lighter forms, structurally stable, covering larger surfaces with shells.

Bringing concrete shells to attention again, because of all the technological advances mentioned above, could be the next engineering challenge.

REFERENCES

- [1] S. Timoshenko, S. Woinowsky Krieger - "Theory of plates and shells", McGraw- Hill Book Company, Classic Textbook Reissue, 1989
- [2] Abaqus ® Analysis User's Guide 13.1.1 – Analysis Types and Optimization
- [3] P.C. Varghese – “Design Reinforced Concrete Shells & Folded Plates”, Phi Learning Pvt. Ltd. 2008
- [4] Christian Meyer & Michael H. Sheer – “Do concrete shells deserve another look” – Concrete International, October 2005
- [5] David P. Billington -“Thin Shell Concrete Structures” – 2nd Edition, McGraw Hill Book Co. New York 1982
- [6] Sigrid Adriaenssens, Philippe Block, Diederik Veenedaal, Chris Williams – “Shell Structures for Architecture, Form Finding and Optimization” , Routledge , Taylor and Francis Group, 2014